

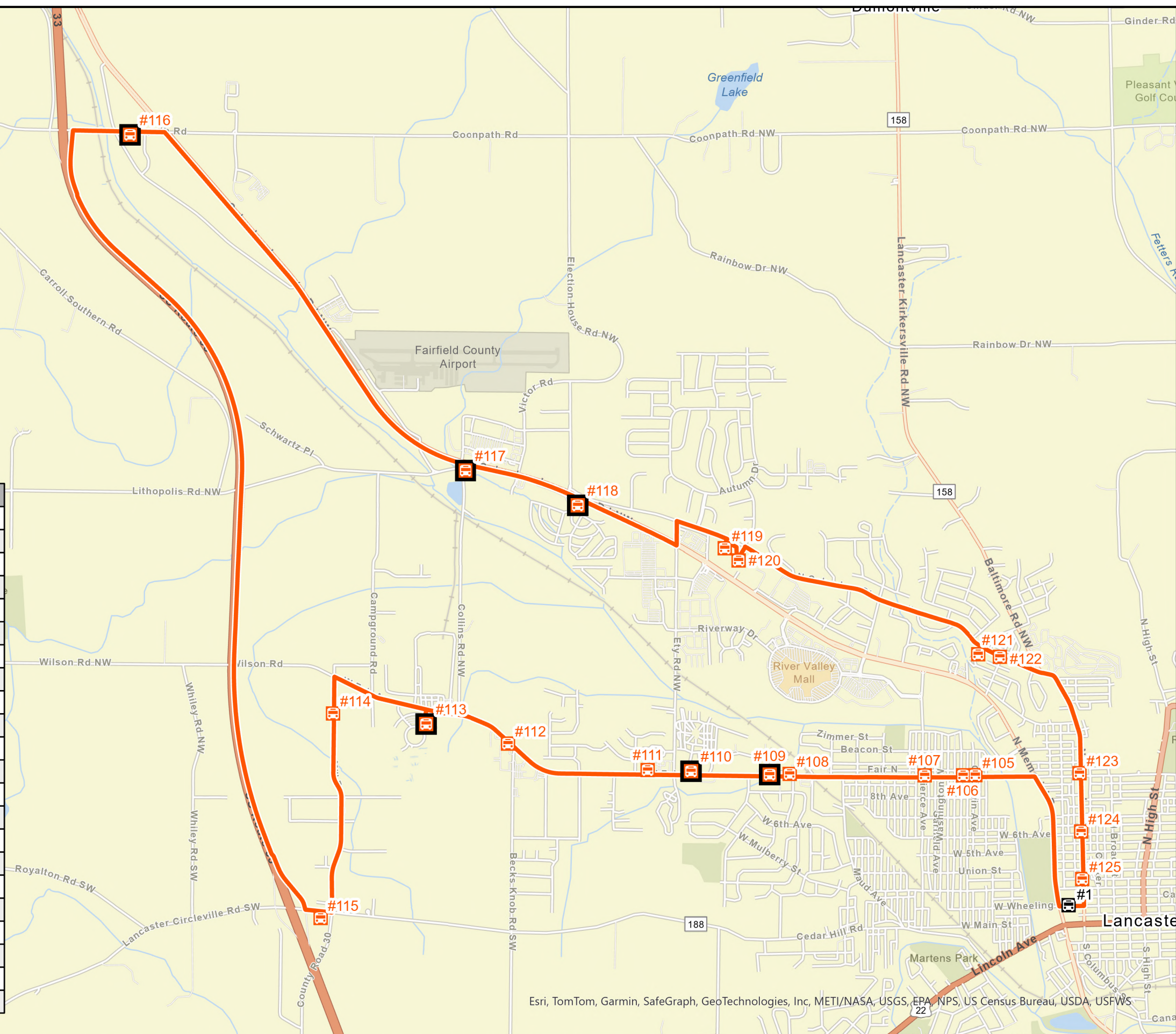


FAIRFIELD COUNTY TRANSIT

PUBLIC TRANSIT ROUTE #5 - NORTH

■ = Stop available upon request

Stop #	Time	Location
1	:00	JOB AND FAMILY SERVICES
105	:00-:05	W. FAIR AVE (GOODWIN AVE)
106	:00-:05	W. FAIR AVE (HARRISON AVE)
107	:00-:05	W. FAIR AVE (PIERCE AVE)
108	:05-:10	W. FAIR AVE (DOLLAR GENERAL)
109	:05-:10	W. FAIR AVE (PRESTIGE BLVD) (UPON REQUEST)
110	:05-:10	W. FAIR AVE (CAMPGROUND) (UPON REQUEST)
111	:05-:10	W. FAIR AVE (GYPSY JOES)
112	:10-:15	W. FAIR AVE (REFLECTIONS)
113	:10-:15	W. FAIR AVE (BMV) (UPON REQUEST)
114	:10-:15	MILL PARK
115	:15-:20	LOVES TRUCK STOP
116	:20-:25	WORKFORCE CENTER (UPON REQUEST)
117	:25-:30	LIGHTHOUSE (COLLINS RD) (UPON REQUEST)
118	:25-:30	COLONIAL ESTATES (UPON REQUEST)
119	:30-:35	RIVERVIEW SURGERY CENTER (DOOR B)
120	:30-:35	FMC (COLUMBUS ST - MAIN ENTRANCE)
121	:35-:40	PERSHING HOUSE
122	:35-:40	COLUMBUS ST (ARLINGTON AVE)
123	:40-:45	COLUMBUS ST (FAIR AVE)
124	:40-:45	COLUMBUS ST (6TH AVE)
125	:40-:45	METRO HOUSING



Esri, TomTom, Garmin, SafeGraph, GeoTechnologies, Inc, METI/NASA, USGS, EPA, NPS, US Census Bureau, USDA, USFWS